



LONG LIFE BATTERY OPERATED ASSET TRACKING DEVICE

The Syrus TT is a rechargeable battery operated asset 3G/GPRS tracking product designed for advance tracking functionalities and remote monitoring of high value mobile assets. Together with multicarrier global connectivity m2mCloudConnect and Pegasus Gateway - web application- it is the ideal solution for managing assets that need to be deployed for long periods without external power supply.

Enhanced Functionality & Features:

- Standalone self-powered tracking device with superior GPS performance.
- Ruggedized IP67 polycarbonate sealed enclosure.
- High performance Li-Ion Rechargeable battery with advance power management capabilities.
- Metal tamper detection for immediate device removal notifications.*
- Built-in 3-axis accelerometer sensor for high resolution reporting.
- Global SIM card with multi carrier preferences through m2mCloudConnect division.
- Totally configurable over-the-web using Pegasus Gateway application with custom script reporting configurations.
- Remote management diagnostics performance and firmware over the air capabilities.
- 100 built-in Geo-fences.
- Automatic battery status notifications.
- Seal cable for theft detection on container door opening.

Industries & Applications

- Transportation: Trailers, Containers, Cargo, Railcars
- Construction companies: heavy equipment & machinery
- Rental equipment: electricity generators, mobile offices, waste containers, chemical toilets.



Physical Specifications:

Unit Dimensions: 2.59 x 3.07 x 11.36" (65.8 x 78 x 288.6)
 Weight: TBD
 Material: Glass Filled Polycarbonate 94V-0 rated material
 Waterproof casing: IP-67 sealed

Environmental Specifications:

Temperature: Operating: -20°C / +60°C
 Storage: -30°C / +85°C
 Humidity: up to 95% non-condensing

Battery Pack Specifications:

Capacity: 39 Ah
 Operating Voltage: 3.7V
 Technology: Li-Ion
 Weight: 750g
 Protection: Internal PCM Circuit
 Temperature Ranges: Charge: 0°C / +45°C
 Discharge: -20°C / +60°C

Electrical Specifications:

Operating Voltage: 3.7V Internal Li-Ion battery
 Current Consumption: Long Term Average: 40mA
 Sleep Mode Average: 5mA

GPS Specifications:

GPS Solution: MTK MT3329
 Frequency: L1, 1575.42MHz
 Sensitivity Acquisition: -148dBm, cold start
 Reacquisition: -160dBm
 Tracking: -165dBm
 Channels: 66
 TTFF Hot start: 1 second typical
 Warm start: 33 seconds typical
 Cold start: 35 seconds typical
 Altitude Maximum: 18,000m (60,000 feet)
 Velocity Maximum: 515m/s (1000 knots)
 Acceleration Maximum: +4G
 Update Rate: 1Hz (default), maximum 10Hz
 DGPS: RTCM protocol / SBAS (default) [WAAS, EGNOS, MSAS, GAGAN]
 AGPS: Support

Cellular Modem Specifications:

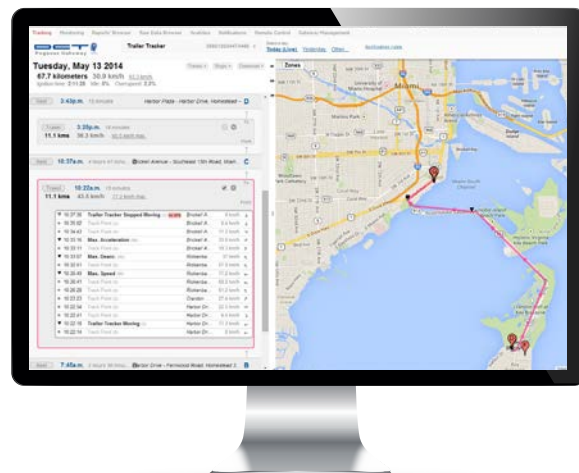
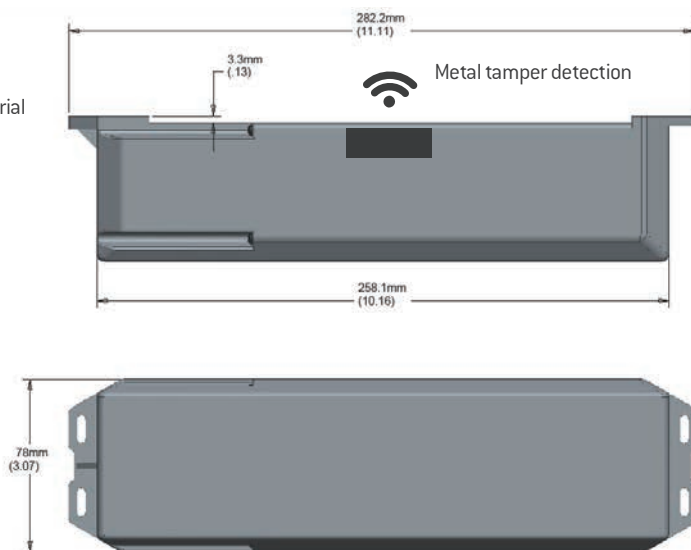
GSM/GPRS Quad Band: 850/900/1800/1900 MHz
 Data transmission: GPRS Class 12 & Class 10 Max. 86 kbps (DL and UL) Coding schemes CS 1-4
 Output Power: Class 4 (+33dBm ± 2dB) for EGSM850
 Class 4 (+33dBm ± 2dB) for EGSM900
 Class 1 (+30dBm ± 2dB) for GSM1800
 Class 1 (+30dBm ± 2dB) for GSM1900
 Messages: Over SMS and GPRS

Mounting:

Screw Mount

Additional Characteristics:

Internal Accelerometer: +6G
 Transmission Buffer: 7,200 buffered messages



Reporting Frequency	Estimated Battery Operation Time*	
	TT w/Syrus2	TT w/Syrus3
1h	133 days	188 days
6h	231 days	637 days
12h	249 days	837 days
24h	259 days	992 days

*approximate values

